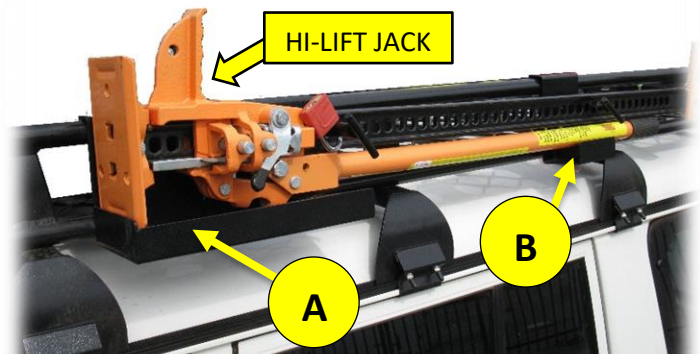
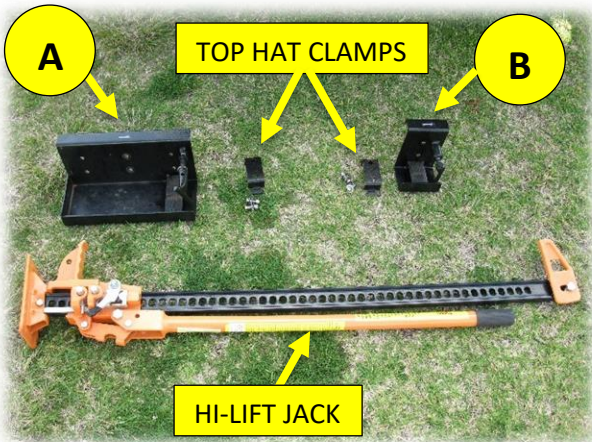


HI-LIFT JACK CLAMP FIT INSTRUCTIONS

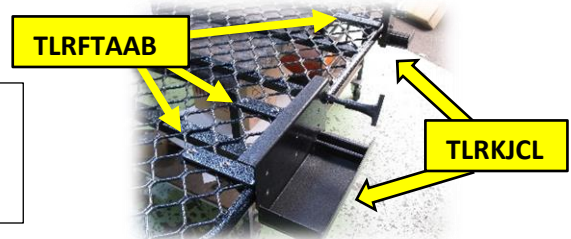


The **TRACKLANDER – HI-LIFT JACK CLAMP (TLRKJCL)** mounted to the side of a Tracklander Roof Rack with enclosed sides.

The **TRACKLANDER – HI-LIFT JACK CLAMP (TLRKJCL)** is designed to carry all Types of High-Lift 4WD Jacks safely and securely when mounted to the Side or Rear of Tracklander Roof Racks with a standard overall height Side Rail (140mm).

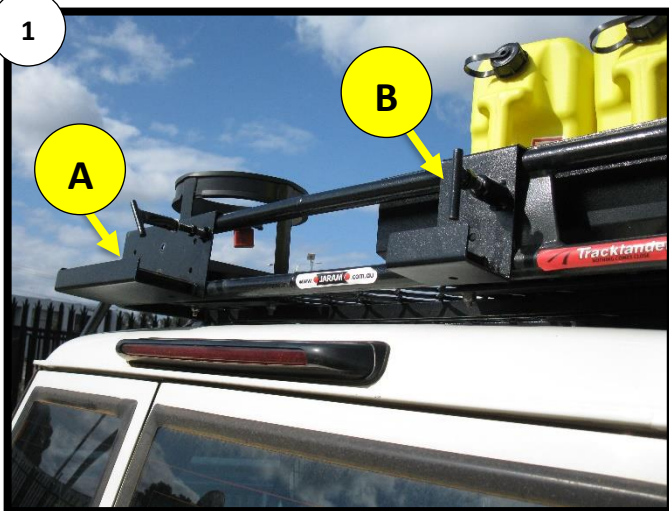
The Tracklander Hi-Lift Jack Clamp consists of a Large Mounting Bracket (A) and a Small Mounting Bracket (B) and is made from Powder Coated Zinc Plated Steel. The 2-Part Clamp Brackets can be moved along the side of the Roof Rack to make them adjustable and lockable. There is a Rubber Buffer Strip in the base of both Clamp Brackets for the Jack to rest on and prevent vibration and damage caused by rough terrain. The Mounting Brackets and Stainless-Steel Fasteners are provided. **NOTE: The Padlock shown is not included.**

NOTE: The Hi- Lift Jack can also be fitted to the **TRACKLANDER FLAT TOP ROOF RACKS** using a **FLAT TOP ACCESSORY ADAPTOR BRACKET (TLRFTAAB – 3 x Part)**.



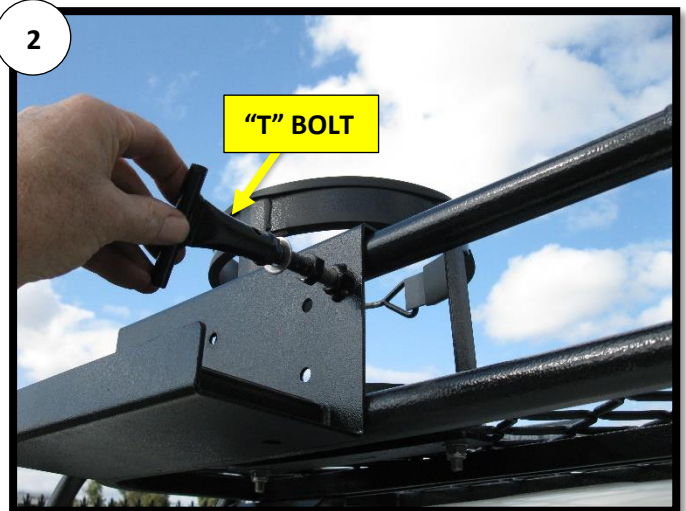
The **TRACKLANDER HI-LIFT JACK CLAMP (TLRKJCL)** mounted to a **TRACKLANDER ROOF RACK**.

1



- Hang the Hi-Lift Jack Brackets (A) & (B) in required position on Rear or Side of Tracklander Roof Rack.

2



- Hang the Hi-Lift Jack Brackets (A) & (B) in required position on Rear or Side of Tracklander Roof Rack.
- Remove the "T" Bolts from both Brackets.
- Apply a small amount of Grease to "T" Bolt Threads to prevent binding.



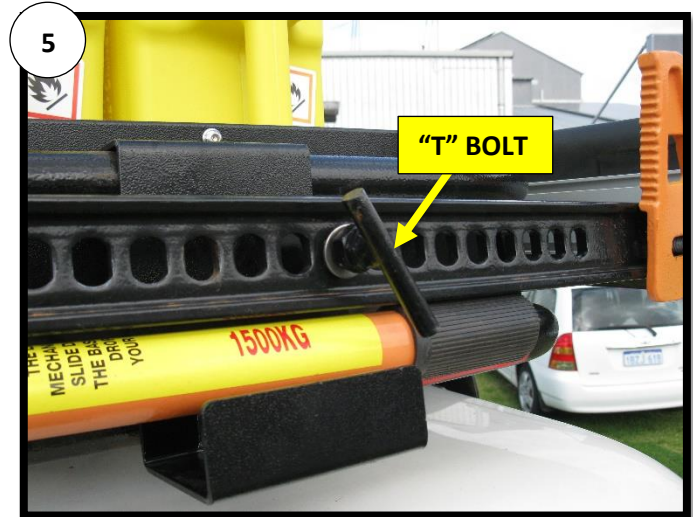
3



4

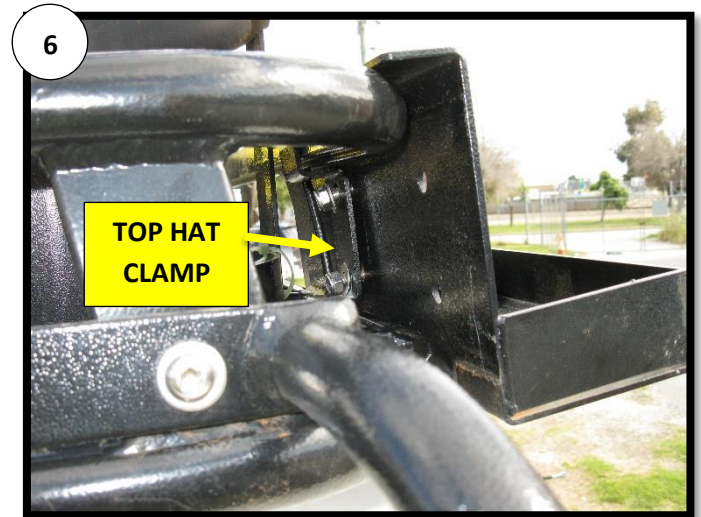
- Lift the Jack and place Jack Base in **Bracket (A)** and the Handle with Slotted Bar in **Bracket (B)**.

- Align the Bar Slot with the Threaded Hole in **Bracket (A)** and Screw in the "T" Bolt.



5

"T" BOLT

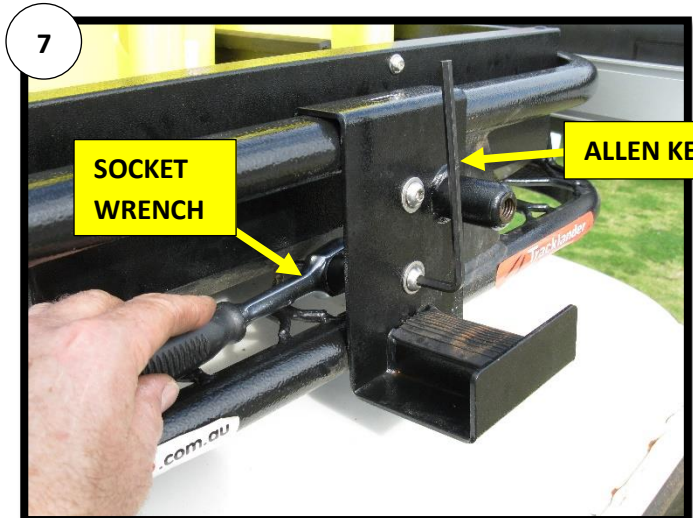


6

TOP HAT CLAMP

- At the Handle End, Align the Bar Slot with the Threaded Hole in **Bracket (B)** and Screw in the "T" Bolt.

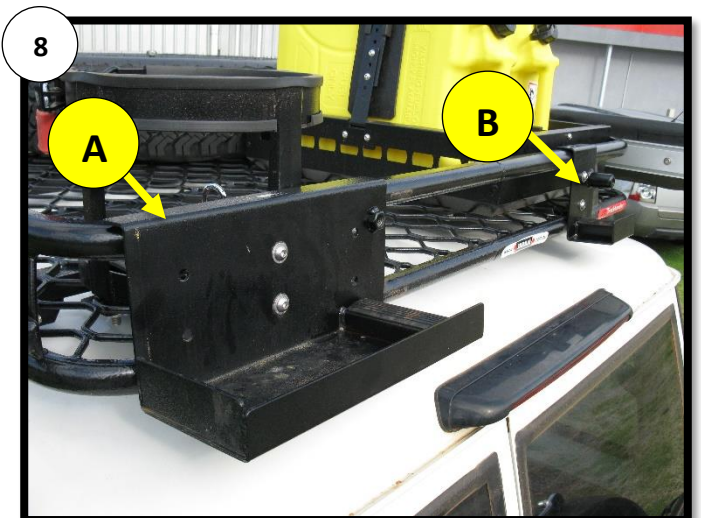
- Fit the Top Hat Clamps in position and align Fasteners with holes in the Mounting Brackets **(A) & (B)**.



7

SOCKET WRENCH

ALLEN KEY



8

A

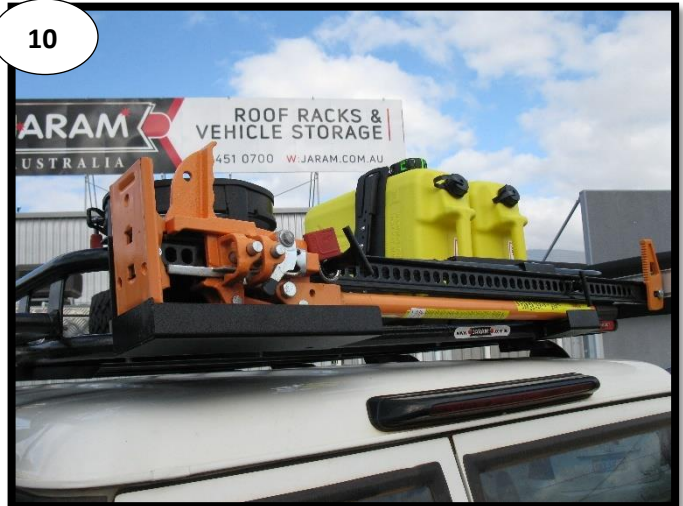
B

- Remove Hi-Lift Jack and tighten the Top Hat Clamps in position with M8 x 25 But. Soc. Screws, Flat Washers and Nyloc Nuts to secure the Mounting Brackets **(A) & (B)**.

9



10



- Position the Hi-Lift Jack in Brackets (A) & (B) and firmly Tighten the “T” Bolts.
- For security, fit a Padlock (with $\varnothing 6\text{mm}$ – $\varnothing 8\text{mm}$ Shank) through the Hole in the “T” Bolt in Bracket (A) and lock it to prevent “T” Bolt turning.

11



The TRACKLANDER HI-LIFT JACK CLAMP (TLRKJCL)
mounted to Rear of a TRACKLANDER ROOF RACK.

NOTE: Check Hi-Lift Jack Mounts are always tight, especially when travelling over rough terrain.