

# NM-NP & NS-NX MITSUBISHI PAJERO WAGON WITH ROOF RAILS (2003 on) TRACKLANDER (TLRAL22FT) & TOUGH BAR (LB142-03RMP) FITTING INSTRUCTIONS.

**NOTE: NM-NP PAJERO Wagon (2003-2006) with Roof Rails, must have Hood Lining lowered and all Roof Rail securing Nuts removed from inside, before Roof Rails can be removed from Roof Top.**



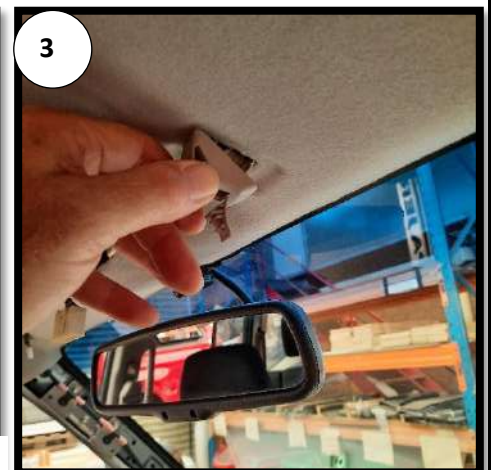
The TLRAL22, TLRAL22FT or TLRAL22OE TRACKLANDER ROOF RACK and TOUGH BAR(LB142-03RMP) mounts to the existing Holes in the roof top Ditch, after the Hood Lining has been lowered and Roof Rails removed from the Roof Top of the NM-NX Pajero Wagon. This provides a strong and safe Roof Rack and Mounting System for Off Road conditions.

## REMOVAL OF HOOD LINING

### REMOVE SUN VISORS & HOOKS

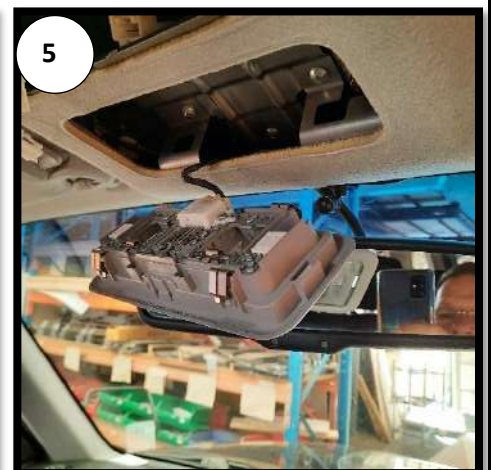
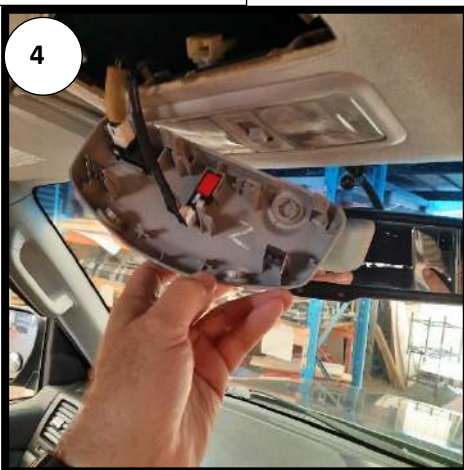


- Remove Screws from Sun Visor Bracket and disconnect wiring connector.



- Remove Screw and Hook, both sides.

### REMOVE PLASTIC CENTRE ROOF CONSOLE & LIGHT UNIT



- Gently prise down the edges and remove Plastic Roof Console and Light Unit. Disconnect wiring connectors.

**REMOVE FRONT GRAB HANDLES & PILLAR COVERS**



6

- Remove Caps and Screws to remove Grab Handles, **both sides**.



7

- Pull down Door Seal Rubber and remove Front Pillar Covers.



8

**REMOVE SIDE GRAB HANDLES (FRONT, CENTRE & REAR)**



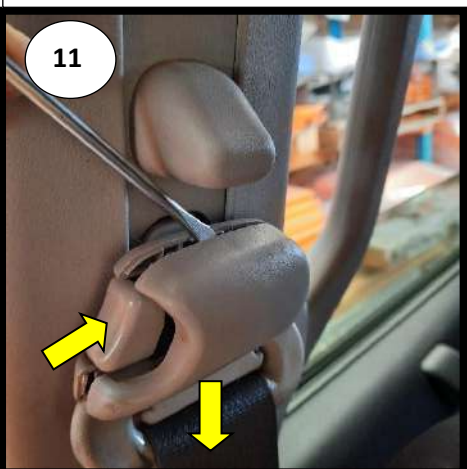
9

- Pull Grab Handle down, lift Plastic Tabs, undo screws, and remove all 6 x Side Grab Handles - (FRONT, CENTRE & REAR).



10

**REMOVE FRONT SEAT BELT RETAINERS & PILLAR COVERS**



11



12



13

- Push in, Side Button and slide Seat Belt Retainer to lowest position.
- Prise open Seat Belt Retainer Cap, carefully remove, then undo and remove Seat Belt Retainer Nut, **both sides**.



14

- Pull down Front & Centre Door Rubber Seals.
- Carefully prise Plastic Pillar Covers away from "B" Pillars on both sides with Plug Removal Tool or Screwdriver.
- **NOTE:** If using Screwdriver, cover Flat Blade with Electrical Tape to stop damage to paint and Panels.



15

**REMOVE REAR DOOR SEAL & REAR SIDE COVERS**



16



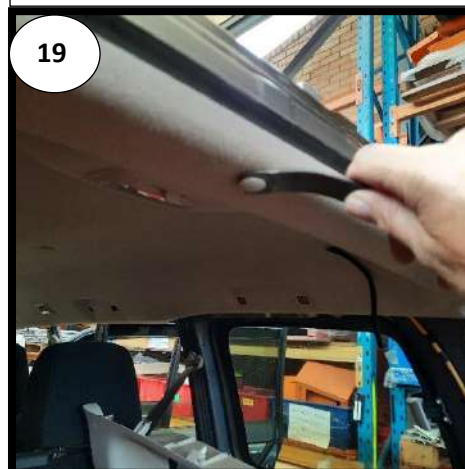
17



18

- Pull down Rear Door Seal Rubber.
  - Carefully pull Plastic Side Covers inwards, from around Side Windows.
- NOTE:** Be careful not to lose Plastic Retainer Plugs on rear side of Plastic Covers.

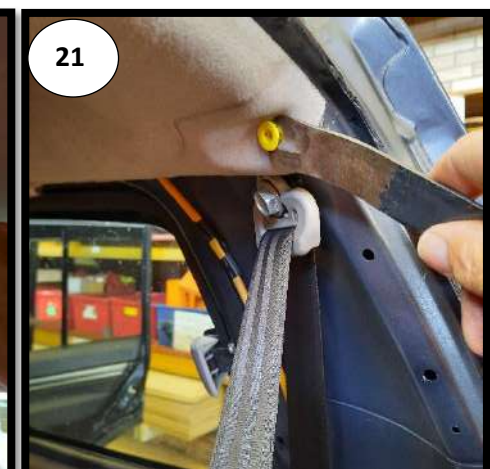
**REMOVE HOOD LINING RETAINER PLUGS**



19



20



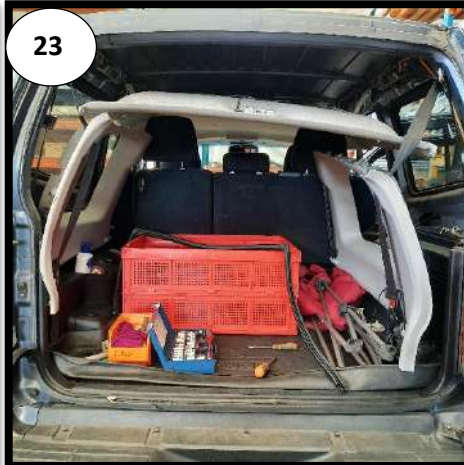
21

- Remove all Hood Lining Retainer Plugs (including the Rear Yellow Plugs, both sides), with Plastic Plug Removal Tool.
- Start from the rear and work towards the front.

**LOWER HOOD LINING**



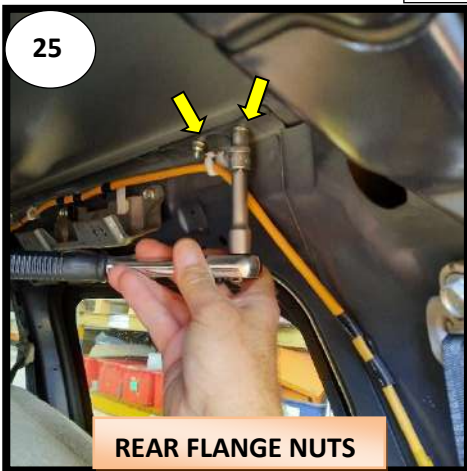
**Hood Lining Plastic Retainer Plugs**



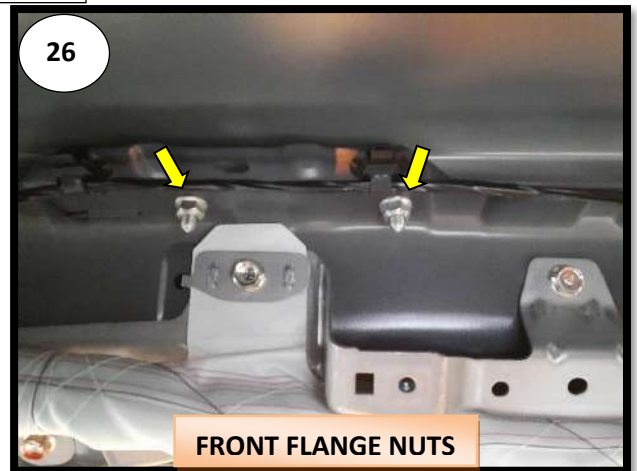
- Gently pull Hood Lining down, until it sits on the Seat Head Rests.
- Roof Rail M6 Flange Nuts will now be seen, just above the Electrical Wiring.

**REMOVAL OF ROOF RAILS**

**REMOVE ROOF RAIL FLANGE NUTS**

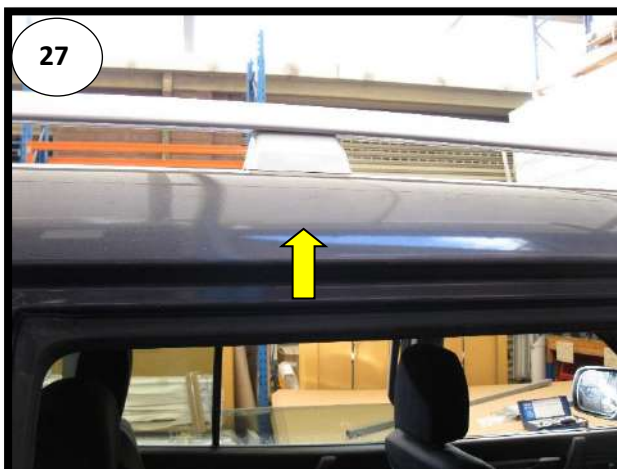


**REAR FLANGE NUTS**



**FRONT FLANGE NUTS**

- Undo 2 x pairs of Flange Nuts (use 10mm Socket) at Rear and Front of Vehicle – both sides.



- Undo 1 x Centre single Flange Nut, below Roof Rail Centre Support – both sides.
- NOTE: Use a 200mm Long Socket Extension Bar & 10mm Socket, through the Rear Grab Handle hole to get easy access to centre Flange Nut.

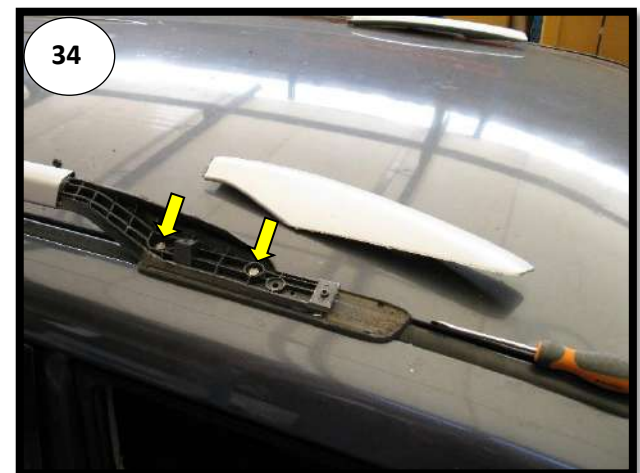
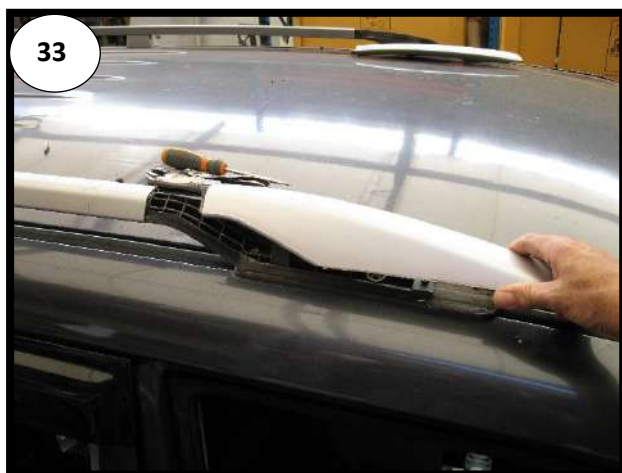
### REMOVE ROOF RAILS & MOUNTING BLOCKS



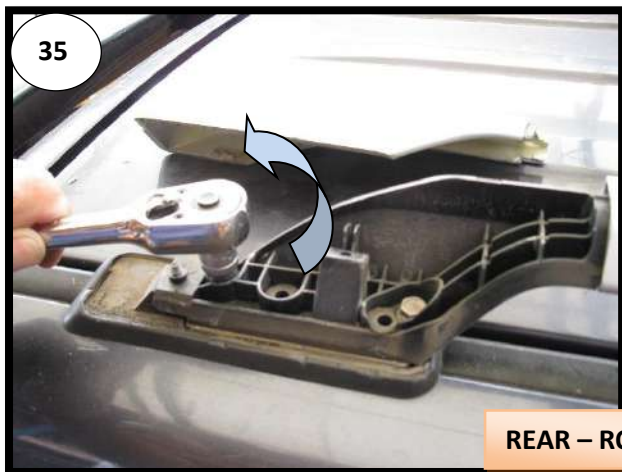
- On the outside of the Vehicle remove the (T25) Torx Head Screw from Rear and Front of Roof Rail – both sides.
- Remove Caps both ends of Roof Rail by gently prising up with Screwdriver, until Clip's release.



- Slide Roof Rail End Caps off, from both Roof Rails.



- Front Roof Rail End Caps removed revealing Fasteners into Plastic Base Pad.

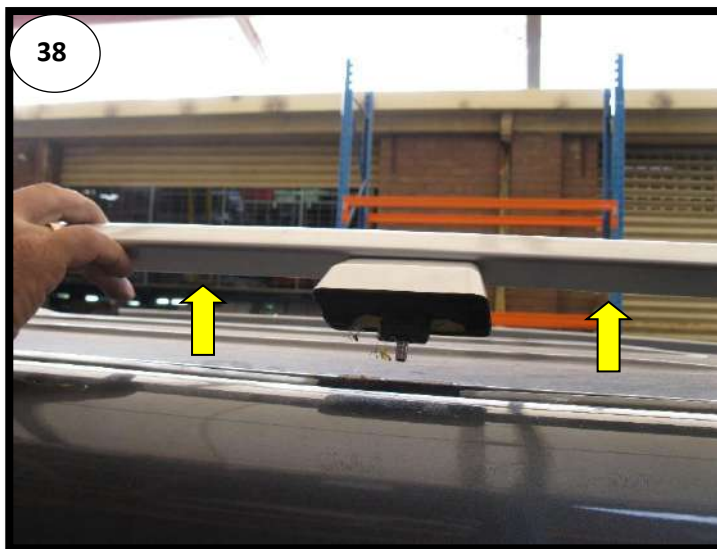


**REAR – ROOF RAIL BASE PAD**

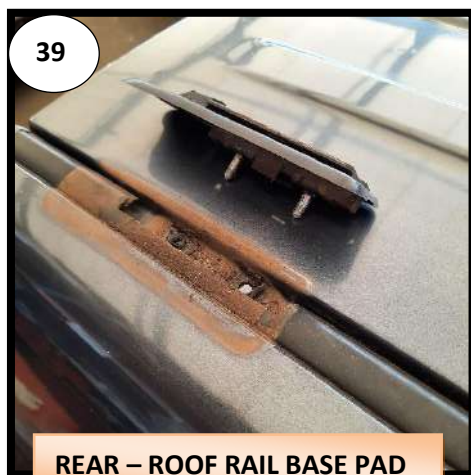
- Remove Threaded Bolts from Plastic Base Pad at each end of Roof Rail.



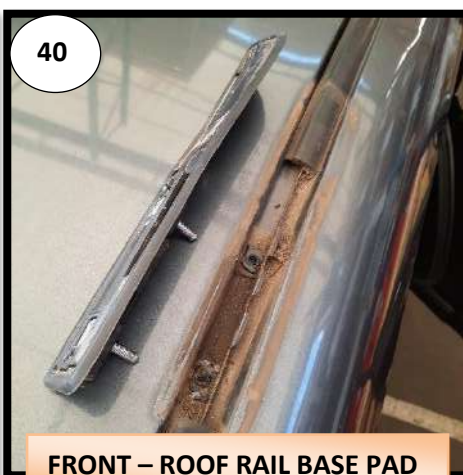
**FRONT – ROOF RAIL BASE PAD**



- With all Fasteners removed, lift Roof Rail up and off the Roof Top – both sides.



**REAR – ROOF RAIL BASE PAD**



**FRONT – ROOF RAIL BASE PAD**



**CLEAN WELL**

- Remove Rear and Front Roof Rail Base Pads.
- Remove any dirt and debris and clean out ditch around holes.

## FITTING SPACER BLOCKS, RUBBER INFILLS & ANGLE BRACKETS

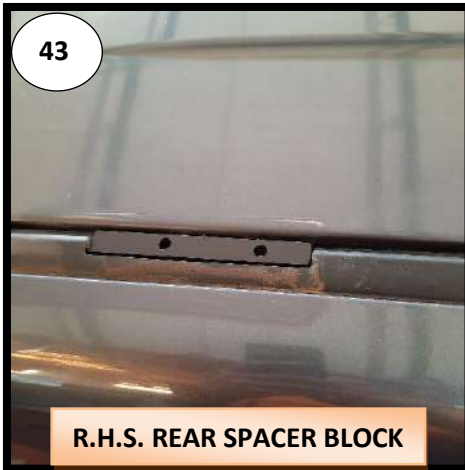
### FITTING SPACER BLOCKS

42



- Put Silicone Sealant in and around the edge of the Holes.
- Fit Spacer Blocks into the rectangular cavities, making sure the Holes line up.

43



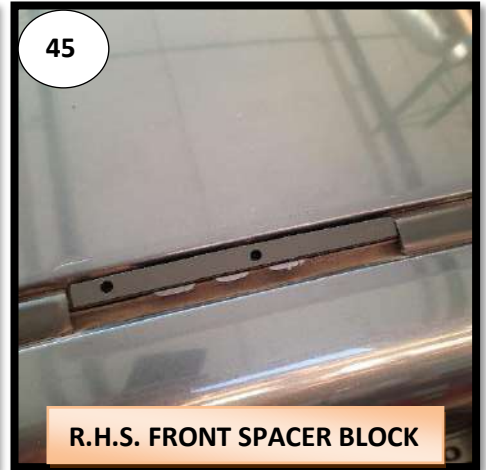
R.H.S. REAR SPACER BLOCK

44



R.H.S. CENTRE SPACER BLOCK

45



R.H.S. FRONT SPACER BLOCK

### FITTING RUBBER INFILLS

46



47

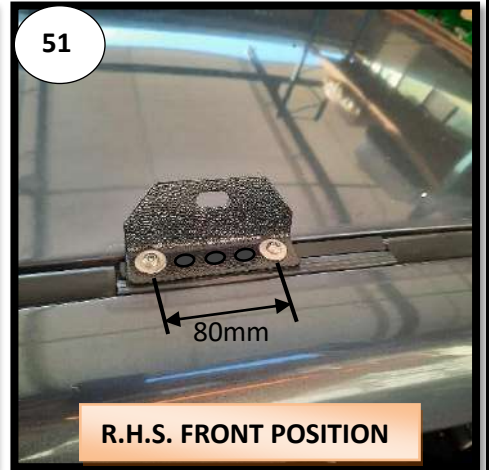
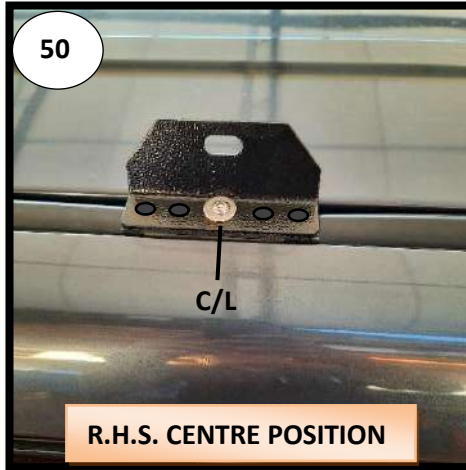
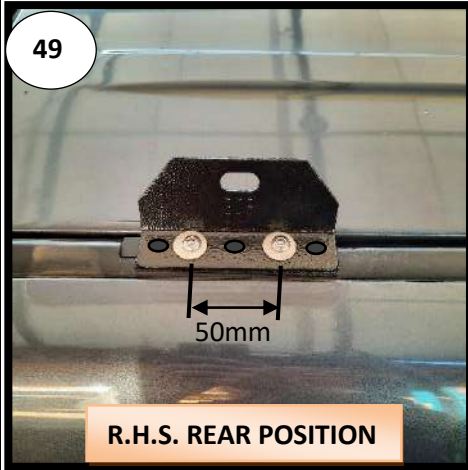


48



- Fit Rubber Infills to the outer edge of the Roof Ditch in line with the Spacer Blocks.  
NOTE: Centre (Short Infill) and Front (Long Infill).

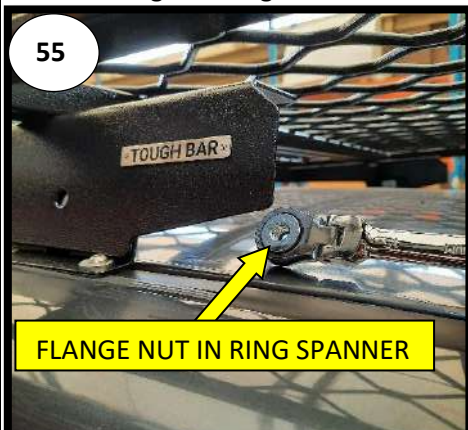
### FIT ANGLE MOUNTING BRACKETS



- Position Angle Brackets, as shown.
- Align holes and fit M6 x 35 But. Soc. Screws with Flat Washers, through holes.



- Fit Flat Washers and Nyloc Nuts on the inside of Vehicle Roof Top and tighten firmly with Angle Brackets in line.
- Measure O/All width of Angle Brackets on Roof top (Rear, Centre & Front) and record the measurements.
- With Roof Rack upside down, position Tough Bars aligning Strut Nuts in Channel Crossmembers.
- Centralise Tough Bars (widthways) on Roof Rack and set up with the recorded measurement as the inside width of the Tough Bar Legs. **NOTE: Arrow on Tough Bar faces towards the front.**



- Lift Roof Rack over rear of vehicle and lower it down on the roof, with the Tough Bars fitting over the Angle Brackets.
- Fit M10 Nyloc Flange Nut into Ring Spanner and align with hole on inside of Tough Bar.
- Fit M10 x 25 But. Soc. Screws with Flat Washers through hole, into Flange Nut and tighten firmly on all.



- Water Test all Roof Top Mounting Points.
- **NOTE: Pour a cup of water around each Angle Mounting Bracket and check for any leaks inside at fixing points.**
- **Replace the Hood Lining using the same steps as removal, in reverse order.**
- Check all fasteners are tightened firmly.

- **NOTE: Check tightness of all outer Roof Top fasteners regularly, especially after travelling over rough terrain.**

