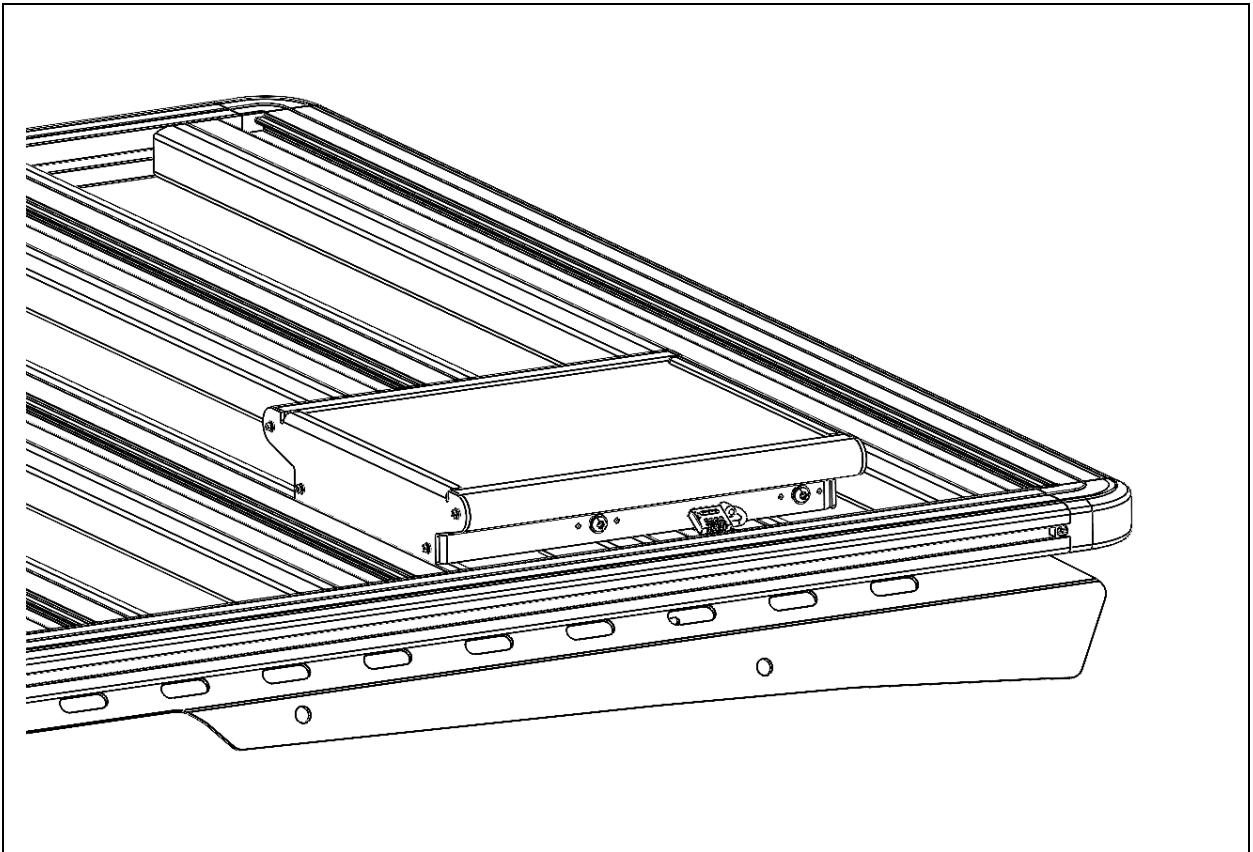


TLRSL

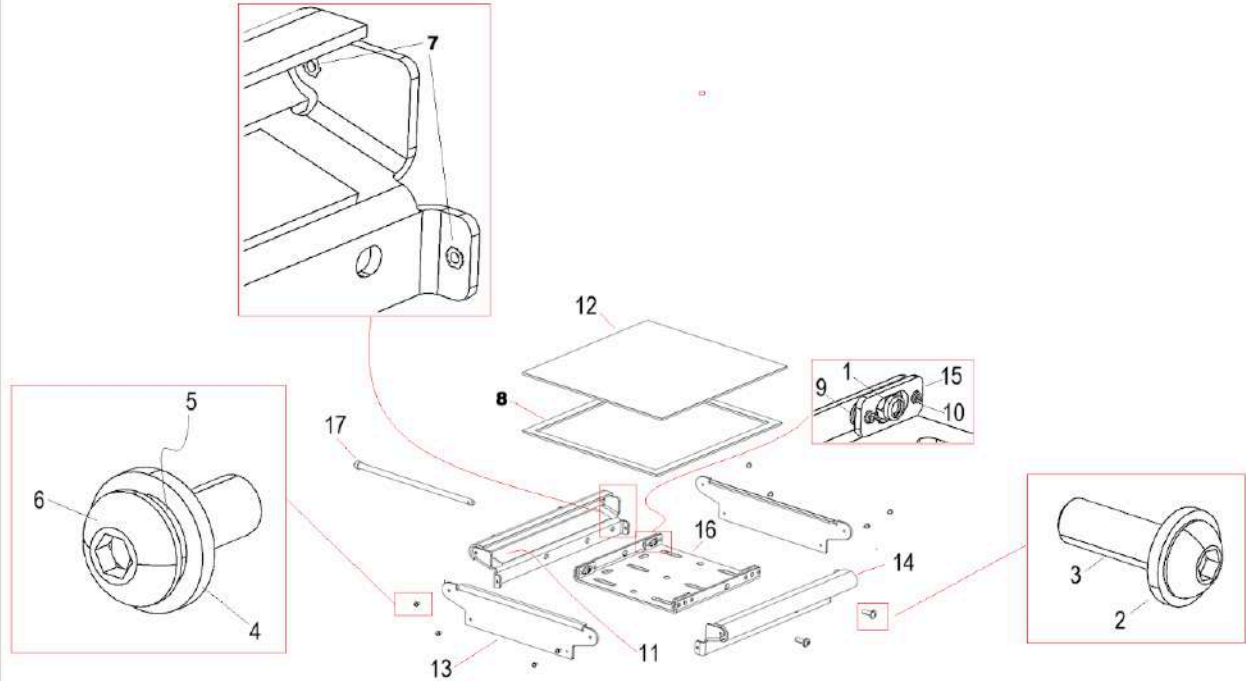
(Starlink Mini Dish Roof Rack Mount)



Thank you for purchasing a TRACKLANDER 4WD ROOF RACK. Before you start, take a moment to familiarise yourself with the Fitting Instructions and the components received.

Refer to the next section for a list of all the components, quantities and tools required.

BOM

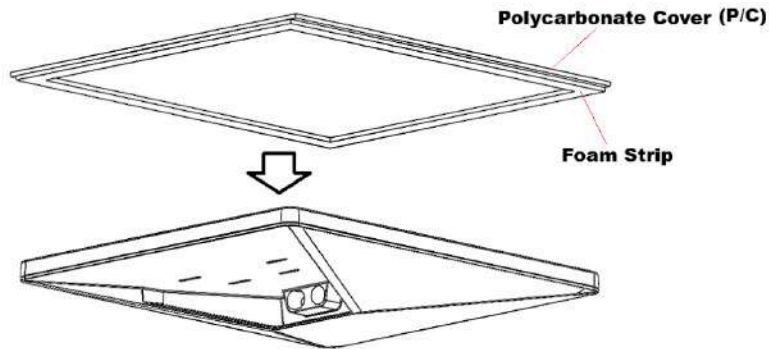


S/N	Description	QTY
1	M6 Nyloc Flange Nut, ZP	4
2	M6 Flat Washer	4
3	M6x x 20 Button Cap Socket Head Screw	4
4	M3 Flat Washer, SS	8
5	M3 Spring Washer, SS	8
6	M3 x 8 Button Cap Socket Head Screw	8
7	M3 x 0.5 Self-clinching Nut (Installed)	8
8	300x260x3 Self-adhesive Foam Frame	1
9	M4 Narrow Washer (Stack 2 per riveting location)	16
10	73AS4-8 Rivet	8
11	260x30x3 Self-adhesive Foam	2
12	PC Cover	1
13	S Casing Clamp	2
14	L Casing Clamp	2
15	M6 Flange Nyloc Nut Retainer	4
16	Base Adaptor	1
17	Lock Pin	1

Securing the Starlink Mini Dish with the TLRSL Casing

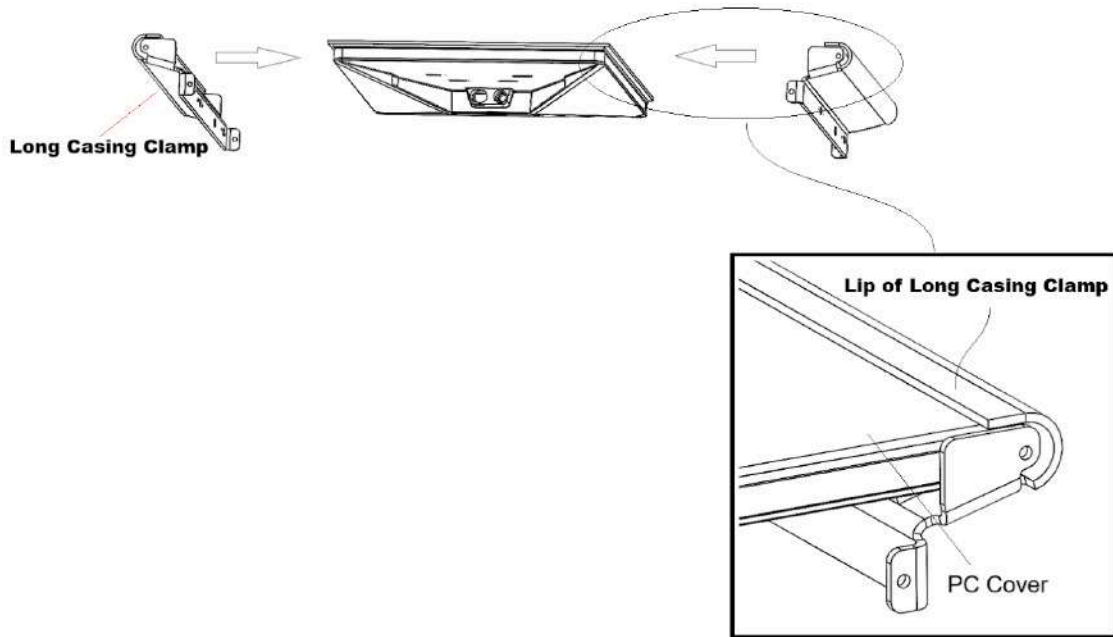
Step 1:

Place the Polycarbonate Cover (P/C) over the Starlink Mini Antenna Dish as shown below. (The Foam Strip attached to the P/C cover rests on the Antenna Dish)



Step 2:

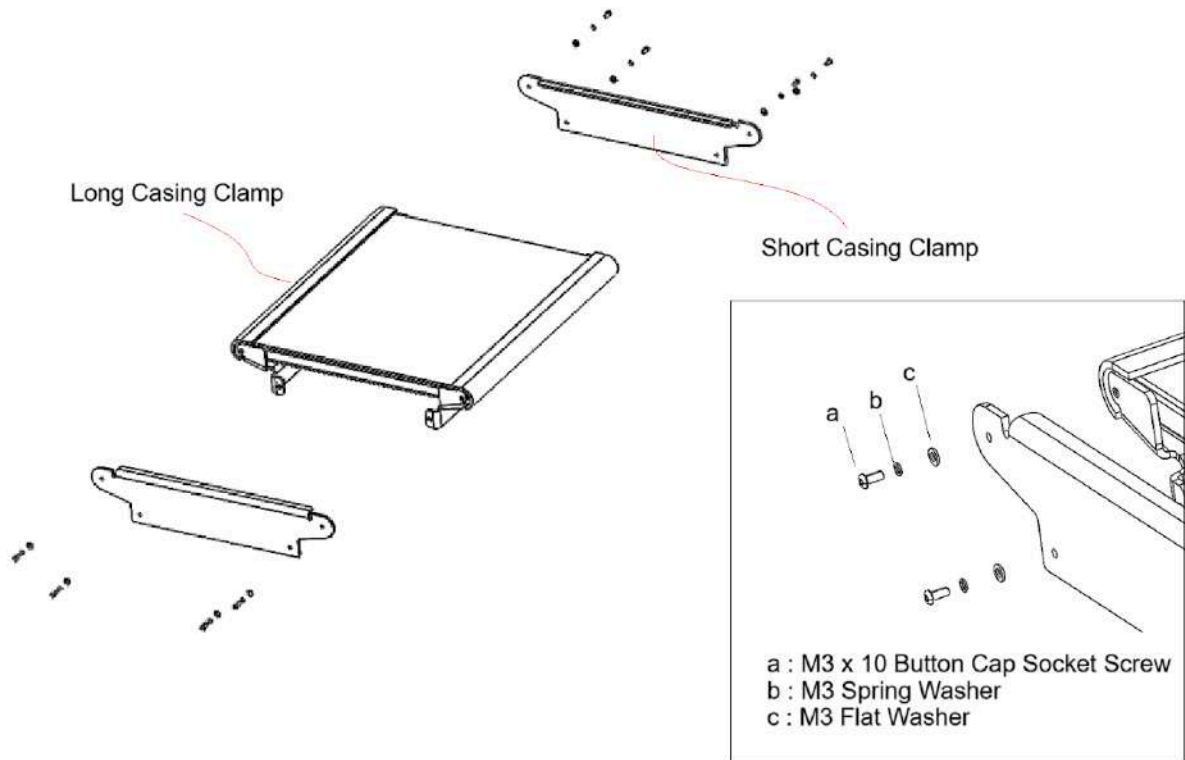
Insert the pair of Long Casing Clamp onto the long side of the Antenna Dish with the lip of the side casing unit over the P/C cover.



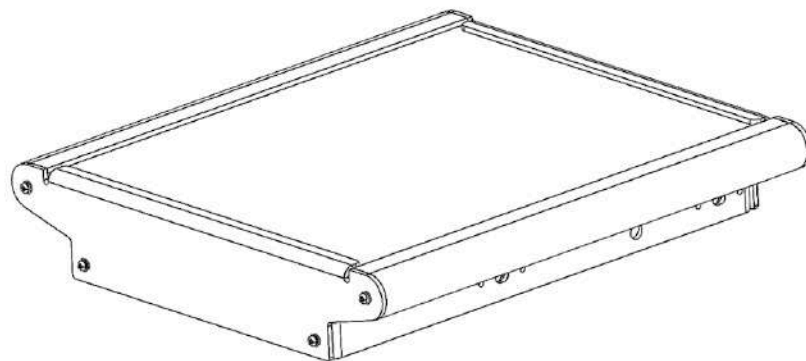
Step 3:

Repeat the same process for the **Short Casing Clamp**.

Align all the holes and secure the casing unit using the fasteners provided.

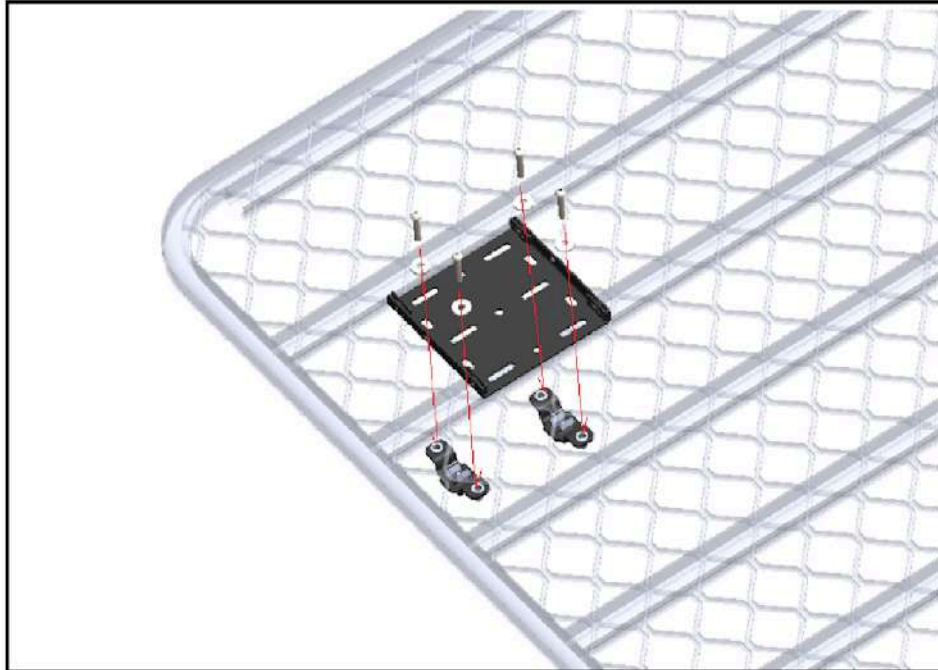


Once the fasteners are tightened, the Starlink Mini Dish will be secured positively into the Casing.



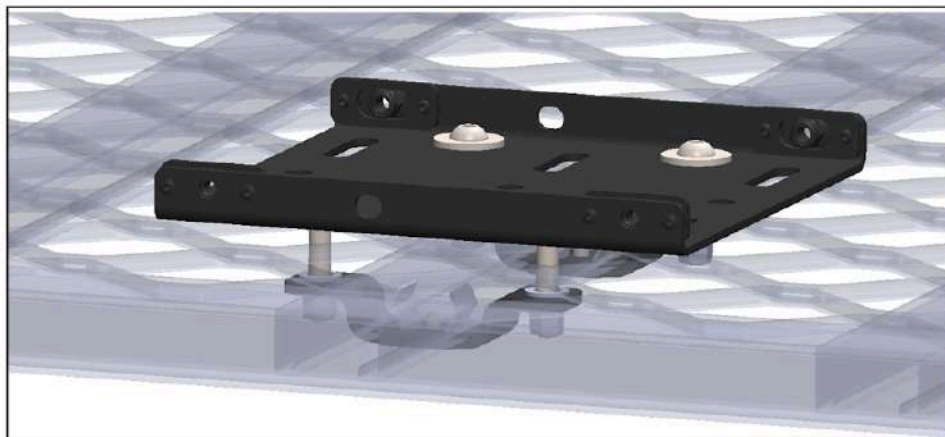
Option 1: Secure using Tiger Clamp (TLRTC)

*Sold separately.



Engaged the Tiger Clamp into the preferred cross member of the Mesh Rack.

Aligned the fasteners provided to the mounting holes of the Tiger Clamp through the selected slots on the TLRSL Adaptor



Tighten the fasteners firmly using a 5mm Hexagon Wrench to secure the TLRSL Adaptor onto the Mesh Rack.

© COPYRIGHT TRACKLANDER 4WD ROOF RACKS 2025

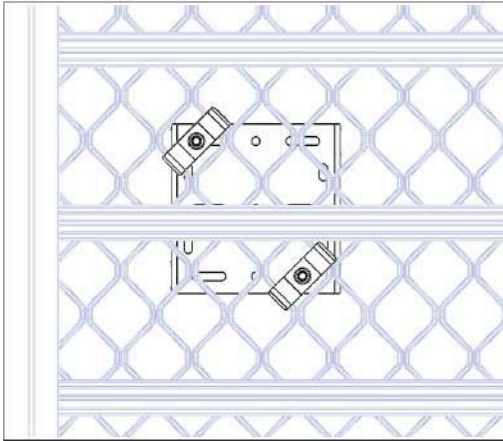
THIS DOCUMENT REMAINS THE PROPRIETARY PROPERTY OF TRACKLANDER 4WD ROOF RACKS AND MAY NOT BE USED OR CHANGED FOR ANY OTHER PURPOSE THEN INTENDED.

Securing TLRSL Adaptor to Tracklander Mesh Rack

Option 2: Secure using Claw Clamp (TLRCC)

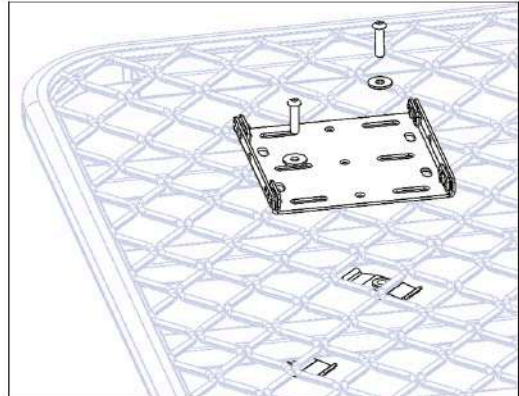
*Sold separately.

Step 1



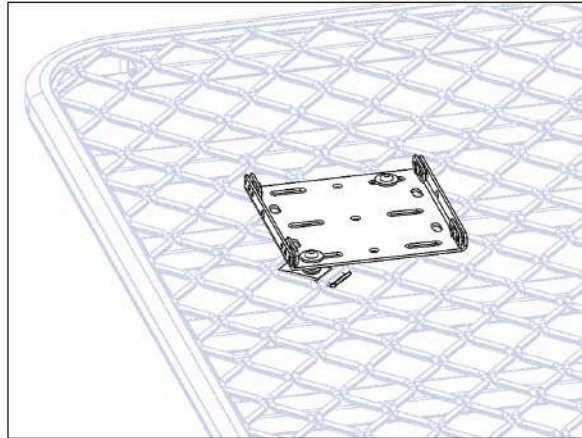
Choose a location on the Mesh Rack where the Starlink Antenna Dish will be mounted.
Make sure the fastening hole of the Claw Clamp is not obstructed by any member of the Mesh Rack.

Step 2



Insert the fasteners provided in the Claw Clamp Kit into the selected mounting holes as illustrated above.
(Whichever works best)

Step 3

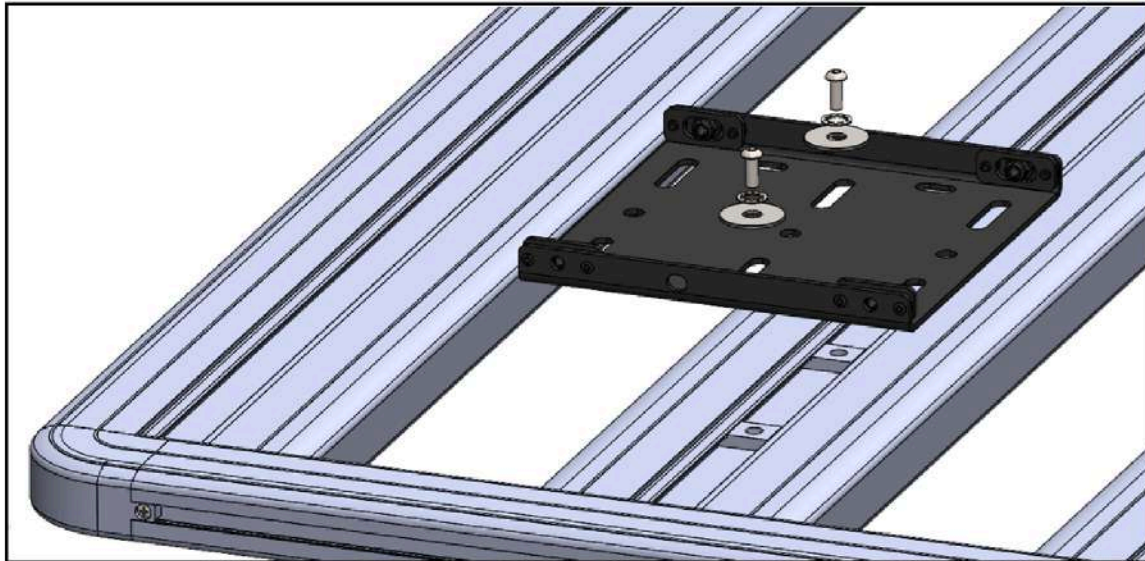


Secured the TLRSL adaptor **firmly** onto the Mesh Rack using a 5mm Hexagon Wench.

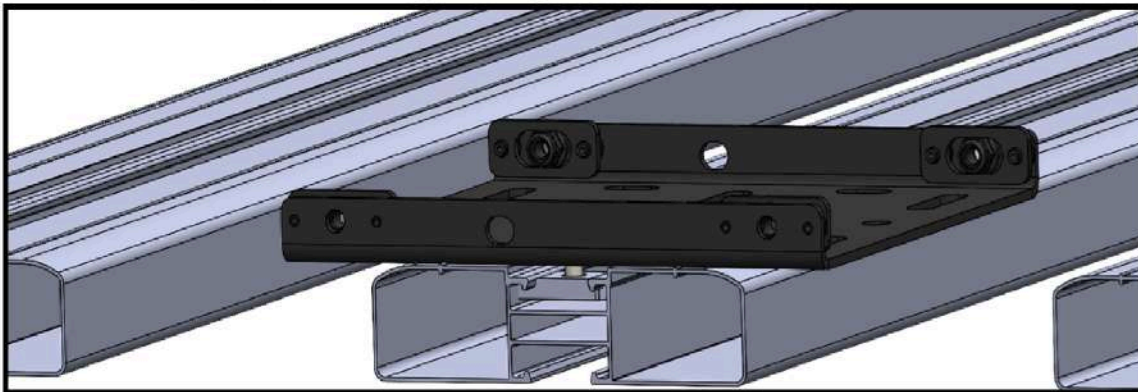
Securing TLRSL Adaptor to Tracklander Plank Rack

Step 1:
Choose a plank that you prefer the TLRSL Adaptor to be mounted on.
Secure the TLRSL Adaptor with 2 set of Plank Rack Fastener Kit.

Plank Rack Fastening Kit (*Sold separately)	
Qty	Description
2	M8 Strut Nut
2	M8 x 16 Button Cap Screw
2	M8 Star Washer
2	5/16 x 1" Flat Washer

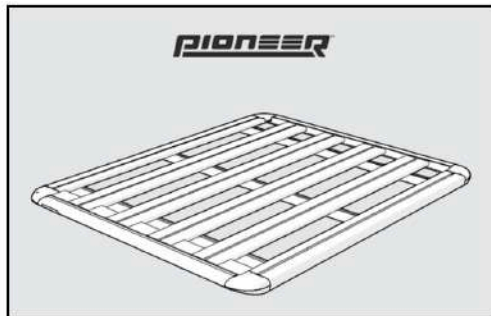


Step 2:
Secure the TLRSL Adaptor firmly onto the Plank using a 5mm Hexagon Allen Key.



Compatibility with other Roof Rack System

Fits to the following rack system.



Secure the TLRSL Adaptor to any of your preferred plank on the roof rack through 2 sets of slots found on the Adaptor. Use channel nuts recommended by your Rack System for securing the TLRSL Adaptor onto the channel of the rack plank.

*Fitting is not limited to the Rack System shown above as long as the targeted rack system provides a pair of securing point to receive the TLRSL Adaptor.

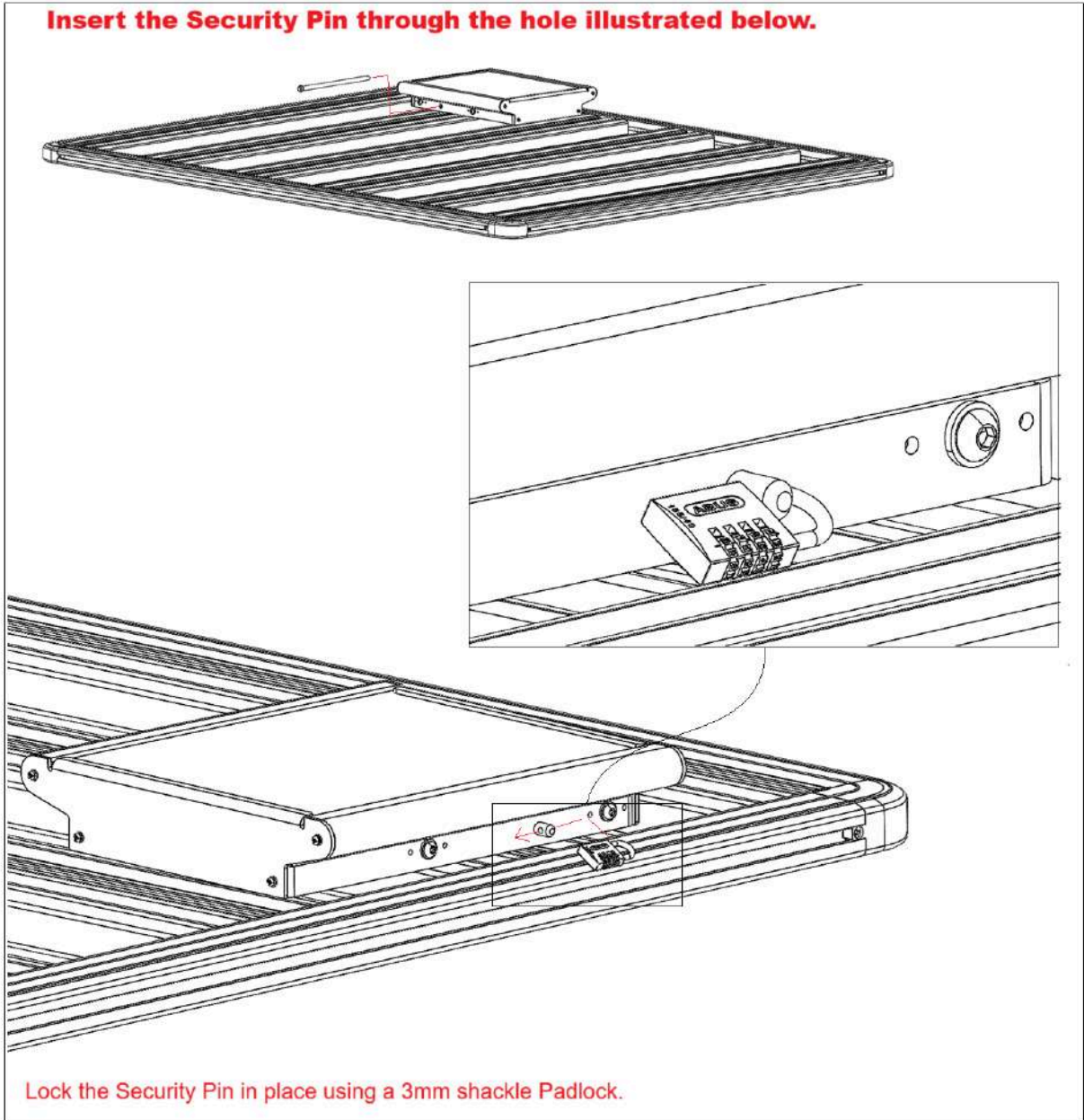
Example: TLRSL adaptor could be secured to a roof bar with securing channel present.



*** : location of securing channel on Yakima Roof Bar System**

Anti-thief function of the TLRSL system

Insert the Security Pin through the hole illustrated below.



Lock the Security Pin in place using a 3mm shackle Padlock.



SAFETY

- Cargo must be secured firmly onto the Roof Rack during operation at all times.
- Frequently check the tightness of cargo on the Roof Rack, especially when travelling over rough terrain or off-road
 - » Use only non-stretchable fastening ropes or straps to attach cargo onto the Roof Rack.
- Extreme care must be taken in off road conditions.

MAINTENANCE

- All bolted connections should be checked after driving a short distance when you first install your roof racks
- All bolted connections should be checked at regular intervals, depending on road conditions, usage, loads and distances travelled
- All bolted connections should be checked each time they are re-fitted.



IMPORTANT WARNING!

IT IS CRITICAL THAT ALL TRACKLANDER 4WD ROOF RACK PRODUCTS BE PROPERLY AND SECURELY ASSEMBLED AND ATTACHED TO YOUR VEHICLE. IMPROPER ATTACHMENT COULD RESULT IN AN VEHICLE ACCIDENT, AND COULD CAUSE SERIOUS BODILY INJURY OR DEATH. YOU ARE RESPONSIBLE FOR ASSEMBLING AND SECURING ALL TRACKLANDER 4WD ROOF RACK PRODUCTS TO YOUR VEHICLE, CHECKING THE ATTACHMENTS PRIOR TO USE, AND PERIODICALLY INSPECTING THE PRODUCTS FOR ADJUSTMENT, WEAR AND TEAR. THEREFORE, YOU MUST READ AND UNDERSTAND ALL OF THE INSTRUCTIONS AND PRECAUTIONS SUPPLIED WITH YOUR TRACKLANDER 4WD ROOF RACK AND ACCESSORIES PRIOR TO INSTALLATION OR USE. IF YOU DO NOT UNDERSTAND ALL OF THE INSTRUCTIONS AND WARNINGS, OR IF YOU HAVE NO MECHANICAL EXPERIENCE AND ARE NOT THOROUGHLY FAMILIAR WITH THE INSTALLATION PROCEDURES, YOU SHOULD HAVE THE PRODUCT INSTALLED BY A PROFESSIONAL INSTALLER OR OTHER QUALIFIED PERSON.

NOTE: TRACKLANDER 4WD ROOF RACKS will not be responsible for any damage caused by the failure to install the product according to these instructions. Please call us if you have any questions about the installation of this product.

TRACKLANDER 4WD ROOF RACKS

T : (08) 9451 0700 E :sales@tracklander.com.au W
:tracklander.com.au A:12 Railway Parade, Welshpool, WA 6106
OPEN 8.00AM - 5.00PM MON-FRI